

may 24, 2020 seventh sunday of easter



st. lawrence o'toole & sacred heart parishes

Mass schedule

St. Lawrence

Saturday Vigil

5:30, 7:30pm (Spanish)

Sunday

8:00, 9:30, 11:00am, 12:30,

5:30pm (Youth Mass)

Monday-Friday

8:30am

Saturday

9:00am

Sacred Heart

Saturday Vigil

4:00pm

Sunday

10:30am

St. Lawrence Cemetery

Plots and cremation niches are available for purchase.

Cemetery office 845-279-2021 x201

call to schedule an appointment.

stlawrenceotoole.org

31 Prospect Street
Brewster, NY 10509
845-279-2021

sacredheartpattersonny.org

414 Haviland Drive
Patterson, NY 12563
845-279-4832

Instagram: [stlawrenceotoole_brewsterny](https://www.instagram.com/stlawrenceotoole_brewsterny)

Facebook: St. Lawrence O'Toole
& Sacred Heart

Twitter: St. Lawrence O'Toole Church

YouTube: St. Lawrence O'Toole
Saint Lawrence



Blessed Mother at Sacred Heart

power of prayer

Please keep these special intentions in your prayers this week

- May 25 Participants in all our faith formation classes
- May 26 Intentions of Pope Francis
- May 27 Intentions of those out of work
- May 28 For all suffering from mental illness
- May 29 Intentions of Deacon Mark
- May 30 For all our parishioners to be protected from the virus
- May 31 For our homeless in Brewster and Patterson

readings for sunday

First Reading: Acts 1:12-14

Responsorial Psalm: Psalms 27:1, 4, 7-8

Second Reading: First Peter 4:13-16

Gospel: John 17:1-11



mass intentions

Saturday, May 23rd	Intentions of Msgr. McCabe Scholarship Fund
Sunday, May 24th	Robert Rocco Russo
Monday, May 25th	Shirley Pigat
Tuesday, May 26th	Carl Konrad
Wednesday, May 27th	Kay Kealy
Thursday, May 28th	Robert Leather, MD
Friday, May 29th	Paddy Killeen
Saturday, May 30th	Victor Richard Conforti
Sunday, May 31st	Sean Tolan Michael John Keegan

pray for

Please remember our brothers and sisters in the Lord who have asked for prayers:

Marilyn Squeo ◦ Joan Quinn ◦ Michaelene Kamin ◦ Jill Moundroukas ◦ Michael Taylor ◦ Larry Tobin ◦ Joan Vesey ◦ Sofia La-Rocca ◦ Victalino Garza ◦ Hanora Campbell ◦ Ryan McMahon ◦ Eleanor Jensen ◦ Sheila Richie ◦ Jessica Fitzpatrick ◦ Rose Maragni ◦ Peggy Cunningham ◦ Vilma Gjuraj ◦ David Weldon ◦ Barbara Hansbury Weldon ◦ Joseph J. Tierney ◦ Patricia Stone ◦ Denise Kurtz ◦ Roseann Blum ◦ Chuck Fox ◦ Frank & Carol Vaccarelli ◦ Elaine Steinhardt ◦ Nina Ricciardi ◦ Mary Thompson ◦ Rebecca Harris-Moreira ◦ Marie Amy ◦ Freddy Lyons ◦ Jennifer Grieves ◦ Maria Middleton ◦ Lawrence Iazzetti Sr. ◦ Mark Lapham ◦ William Fallon ◦ Walter Garecht ◦ Roseanne Barker ◦ Marianne Gallacher ◦ J.P. Schlick

Names will remain on the Prayer List for 90 days and then will be transferred to the prayer list in the Adoration Chapel. To add names to or remove names from the Prayer List, please email: SLOT.SH.Office@gmail.com

“The faith I have when I am in the presence of the Blessed Sacrament is so strong that I find it impossible to express what I feel....When the time comes to leave I must force myself to overcome the inclination to prolong my stay with Jesus.”

- St. Anthony Mary Claret



Keep him company for an hour
stlawrenceotoole.org/Adoration

Adore him where ever you are
stlawrenceotoolelive.org

the best time you will spend on earth

Adoration of the Blessed Sacrament is the source of the vast blessings we are witnessing here at St. Lawrence O’Toole. We have 24/6, (24-hours a day/6 days a week) Adoration in our Divine Mercy Adoration Chapel.

We need your help to expand perpetual Adoration – 24 hours a day/ 7 days a week - and we invite you to join us or add another hour. Discover the love and peace found only in Jesus Christ. It will be the best time spent on earth.

We have Adoration time slots open from **Sunday 12:00 am to Sunday 11:00 pm**, as well as a few others.

Contact Paul Lavelle to discuss the best options for you.
Email Lavelleslot@comcast.net, Sign up for an hour at stlawrenceotoole.org/Adoration or Phone 914-318-8523.



May 24, 2020

while we're at it

our vision Create a parish of missionary disciples whose personal relationship with Jesus Christ inspires others into a life-changing relationship with Him.

Dear Friends,

Hang in there; we're coming back!!!

I don't know exactly when. I can only hope we are back for June sometime. After all, we have **Corpus Christi** coming up June 14 and every year we do the great Procession through the streets of Brewster. I'm sure it will start slowly with safety limitations in place, but soon we'll get back to Mass. I can't wait; we miss you all!

In the meantime, we've had hundreds of you tuning in to our Virtual Church:

- **Livestream Masses** Sundays at 9:30 am and 11:30 am Spanish
- **Seasons of Praise** Holy Hours at 7:00 pm Mondays
- In person, safe **Confessions** in the open Church Mondays 4:00 pm – 7:00 pm
- Facebook Live with **Daily Bread** at noon, **Divine Mercy** at 3:00 pm and **Psalm You To Sleep** at 9:00 pm



And next Sunday being Pentecost, we'll bring **Jesus to Your Neighborhoods** in another Eucharistic Procession starting at 12:15 pm. Sign up at stlawrenceotoole.org/PentecostProcession and get your neighbors to join in!

The pandemic has energized our outreach to the elderly and shut-ins with our **Safety Squad**, and we've developed a new ministry of **Giving Help and Hope** that offers food and essential items to those who have lost their jobs in the crisis. Donate what you can to the next **Giving Help and Hope** Campaign on June 8. It's charity in action!

God bless,

Fr. Richard Gill

P.S. You have been sooo good with donations that keep our parishes going. In both Sacred Heart and St. Lawrence, weekly donations are nearing 100% of normal! And that is thanks in large part to people mailing in their envelopes with the handy self addressed envelopes we are sending each week. But also due to people switching to **WeShare** – the portion of the collection from **WeShare** at Sacred Heart has increased from 10% before the pandemic to almost 38%, and at St. Lawrence from 37% before to over 50% now. Keep it up and thank you so much.

WESHARE ONLINE GIVING



It's simple and easy and takes about a minute. You can back in at any time and change your amounts.

1. **Go to** stlawrenceotoole.churchgiving.com or sacredheartpattersonny.churchgiving.com
2. **Click** Make a Donation
3. **Click** Recurring Donation

Once you've added your account information, donations will automatically deduct from your account.

TEACH • SERVE • SANCTIFY

Your *Cardinal's Appeal* gift will help educate new priests.



"Charity is the root of all good works." - St. Augustine



the **CARDINAL'S**
ANNUAL STEWARDSHIP APPEAL

Sharing God's Gifts

St. Lawrence

Goal: \$73,500.00
Pledged: \$46,875.00
Gifts: 135
Average: \$347
%of goal: 63.7%

Sacred Heart

Goal: \$12,500.00
Pledged: \$ 8,400.00
Gifts: 33
Average: \$254
%of goal: 67.2%

Thanks for continuing to support the *Cardinal's Appeal* in these hard times. This appeal provides the funds for the Cardinal to support poor parishes around the Archdiocese.


GIVING
hope & help

DRIVERS NEEDED – BASED ON DEMAND.

DONATION DROP OFF

between 9 am-4 pm at the rectory.

DONATE Cash/Check or gift cards--drop off at rectory or mail to 31 Prospect Street, Brewster NY 10509

TEXT TO GIVE: Text GIVESLOT or GIVESH to 833-694-0460

need help making ends meet?

Have you lost your job? Are you feeling financially pulled? St. Lawrence and Sacred Heart Parishes are pitching in to help each other in this time of need.

If you are able to make a donation here is what we are looking for:

- Diapers, baby wipes, baby cereal
- Pet food, kitty litter
- Household cleaning solutions, toilet cleaner, Windex, dishwashing detergent, laundry detergent
- Paper towels, toilet paper, tissues
- Toothpaste, mouthwash, shampoo, conditioner, razors, shaving cream
- Cereal, oatmeal, granola, granola bars
- Canned goods, gallons of water
- Gift cards for local supermarkets: Kobackers, Acme, Tops,

GIVING HELP & HOPE DISTRIBUTION DAY

MONDAY, June 8th, 9 am-5 pm

YOU MUST REGISTER ON SIGN UP GENIUS:

SIGNUP FOR HOME DELIVERY:

stlawrenceotoole.org/GivingHelp&Hope

SIGN UP FOR PICK UP HERE: SIGN UP GENIUS ½ hour increments – 20 people at a time.

signupgenius.com/go/60B0448ABA629A3FE3-stlawrence1



pentecost eucharistic procession



May 31 starts at 12:15 pm.

Sign up your neighborhood at
stlawrenceotoole.org/PentecostProcession

VIRTUAL CHURCH

Go to stlawrenceotoole.org for links

We've turned St Lawrence and Sacred Heart into a "Virtual Church" delivering formation and prayer online throughout the day. Join us in these tough times for some renewed hope that Jesus is with us always.



Go to our Facebook page at St. Lawrence O'Toole.



stlawrenceotoolelive.org



Livestream Mass

Sundays 9:30 am
Spanish Mass 11:30 am

If you over sleep, watch the Mass when you wake up and make it the most important part of your Sunday.



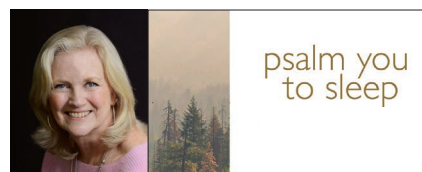
Daily Bread

Fr. Richard Gill
Mondays -Saturdays 12 pm



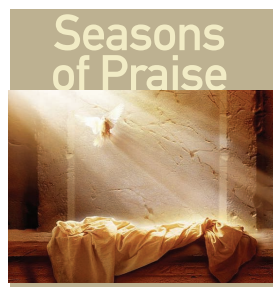
Divine Mercy Chaplet

Cecilia Britez
Monday-Saturday 3 pm



Psalm you to Sleep

Lynda Holler
Mondays-Saturdays 9 pm



Livestream
Seasons of Praise
Mondays 7 pm



helping catholic charities give to those in need

Patty Kaufman

Halfway through the 10th week of quarantine, I had the opportunity to help distribute food to neighbors in the vicinity of St. Lawrence O'Toole Parish. Catholic Charities provided the food along with several lovely and experienced people to guide us through the process. In the blink of an eye a two income home might suddenly have no income, families are finding themselves in food lines and some are going hungry.

It brought me pure joy when I showed up to find Julie Noce and an army of volunteers ready to do whatever we could to help. The truck pulled up with 50lb. bags of onions and carrots and 400 pre-packed bags of food. We grabbed what we could and carried the bags to the dining hall to get prepared. It was an enriching experience to work side by side with many of the familiar faces I have seen for years. As a result of the Covid-19 Pandemic, those faces are suddenly more difficult to recognize as you abide by the mandated 6' social distancing rules and wearing masks. The wearing of masks has proven to be most interesting. People were sharing



techniques on how to make the mask tighter, comparing patterns on homemade masks, all in an effort to make a potentially stressful outing more comfortable. I also recognize the special bonus of see-



ing some of the kids I work with in the Middle School and High School, students I miss very much. In this time of uncertainty, it is important to grasp at the silver lining. It may not appear, you might have to go looking for it. One might be that your family is together more than you ever thought would be possible. A silver lining might be that your child's favorite teacher reached out to them today, and it made their day. You might be done with work and are home an hour sooner than ever since your commute is 10 feet not 65 miles. You are eating lots of meals together because you have to, what a stroke of good fortune that is, enjoy it. You are taking walks together, baking together, cleaning together, like I said, more togetherness than you ever thought was possible. You can even watch virtual Mass together, it has become a Sunday morning ritual in my house.

I will end with one of my favorite St. Theresa of Avila quotes: ***"May today there be peace within. May you trust God that you are exactly where you are meant to be. May you not forget the infinite possibilities that are born of faith. May you use those gifts that you have received, and pass on the love that has been given to you. May you be content knowing you are a child of God. Let this presence settle into your bones, and allow your soul the freedom to sing, dance, praise and love. It is there for each and every one of us."***





it's a great way to start every weekend

Ken Keltos

After attending a Cornerstone Men's Retreat over 5 years ago, I was inspired to take my faith to a new level. But once the retreat is over, I wondered how I could continue getting inspiration on a regular basis. Then I was invited to the Men's Ministry meetings on Saturday mornings. There was good coffee and bagels, and I met new men in the parish. They started at 7 am ending sharply at 8:30 am (an hour and a half). This may seem early but it gives the men an opportunity to meet and fulfill family obligations too.

So I started going, and it was enlightening! "How often do you meet?" I asked. "Every Saturday morning whenever you can make it." This is just what I was looking for. The fellowship with other Christ minded men who discussed challenging topics has been priceless to me. Guess what! I've been showing up ever since. What I've learned from these short meetings has been astounding. As a result, I'm a stronger Christian with my family, my friends, and my community because I put my faith in action.

Prayer is integral to our meetings as well as interesting and relevant topics that are presented by speakers like Bishop Robert Barron, Dr. Edward Sri, Peter Kreft, Fr Larry Richards, Jeff Cavins, and countless others. The teachings challenge us about faith, reason, theology, philosophy, as well as inspiring and giving us practical ways to live our faith. We experience an abundance of benefits. This group is an opportunity to witness and time for fellowship. It's such a great way to start my weekends.

The COVID 19 Pandemic has not interrupted our momentum. When the in-person meetings were restricted, this group immediately jumped on to Zoom meetings. One benefit to our Zoom meetings is having a founding member of the Men's Ministry rejoin us from Florida.

In the end, the Men's Ministry has been a consistent enriching group where I've grown as an individual alongside a dynamic group of men. I am privileged to call them my brothers. The group has so much to offer and I invite all the men of our parishes to try it out. I hope more men will find this treasure and take time for a bit of spiritual growth.

The Men's Ministry just finished a series on **No Greater Love** by Dr. Edward Sri and currently in the middle of **Into The Breach** by the Knights of Columbus.

No prior preparation is required. The materials for each week are independent of each other.

Register at stlawrenceotoole.org/MensMinistry to get the zoom link information.

Hope to see you there!





PLAN NOW FOR YOUR ETERNAL RESTING PLACE

Single or double plots or columbarium for interment of ashes are available.

Contact the Cemetery Office at 845-279-2021 x201 for more information

ST. LAWRENCE CEMETERY 20 Turk Hill Road, Brewster, NY 10509



st. lawrence o'toole

sat, july 4th

mega raffle

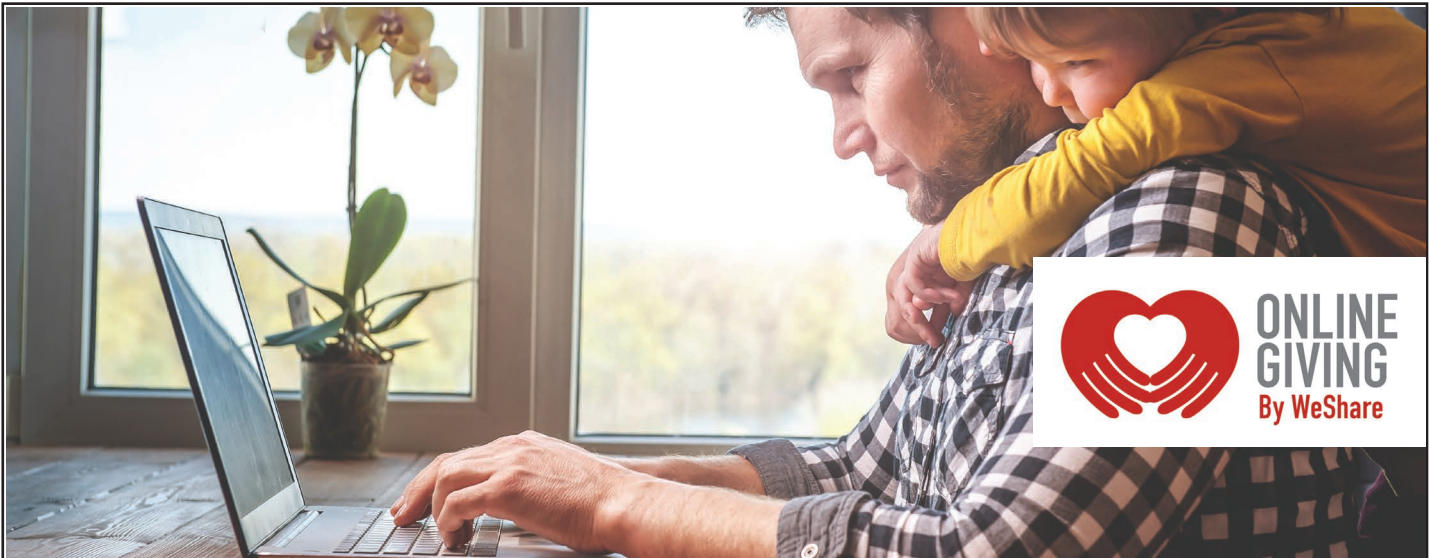
DRAWING at 7:30 pm

ONLY 269 of 750
TICKETS LEFT TO SELL

\$100 EACH OR 3 FOR \$250

WIN
\$25,000
cash

PROCEEDS FOR IMPROVEMENTS TO THE ST. LAWRENCE FAMILY PROGRAM

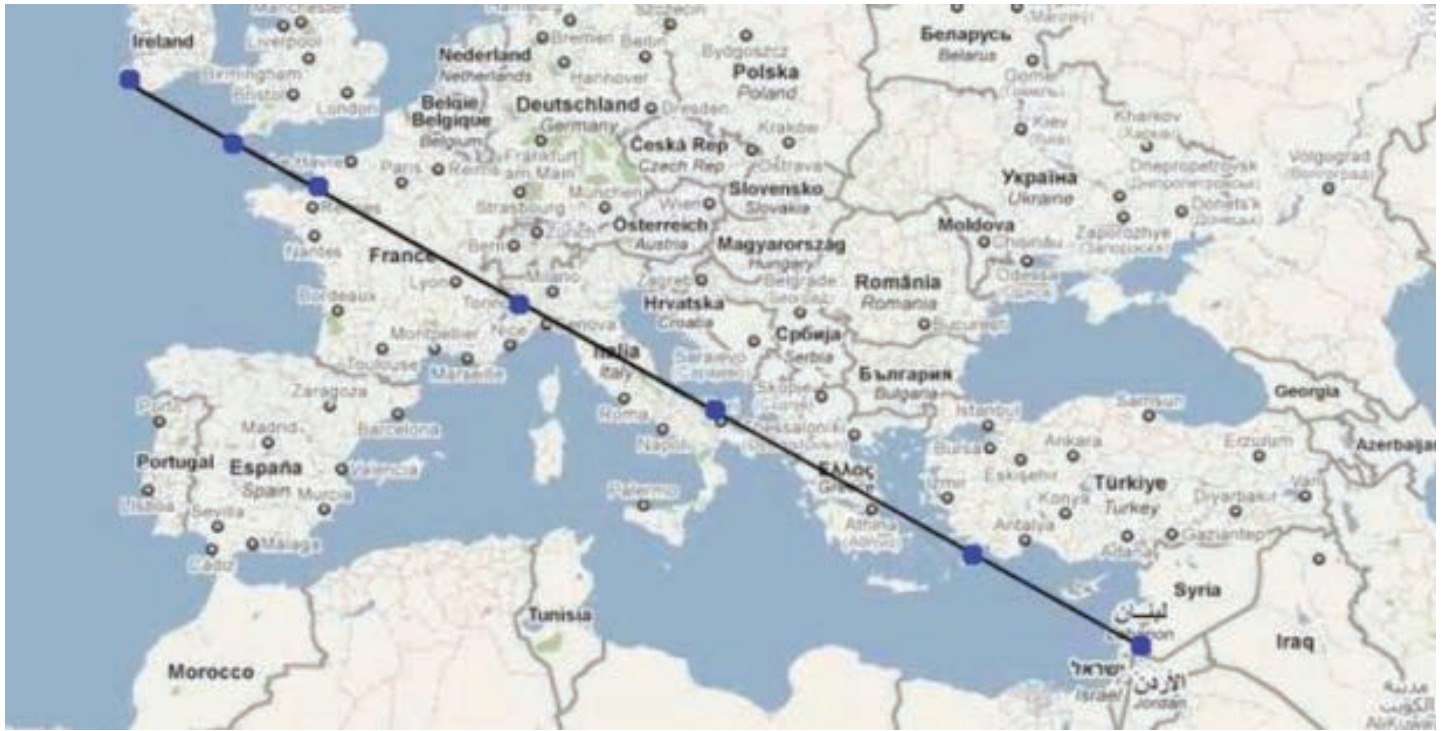


ONLINE
GIVING
By WeShare

Many parishioners in both parishes have switched over to this easy way to give. It has helped us tremendously in keeping our churches going in spite of the pandemic.

Please consider switching over to electronic giving - it's safe, easy, flexible and you don't have to think about it every week. At the same time, you can change and update your giving anytime you want with a few clicks.

give online stlawrenceotoole.churchgiving.com or
sacredheartpattersonny.churchgiving.com



7 sanctuaries linked by a straight line: the legendary sword of st. michael

Gelsomino Del Guercio

According to legend, the line represents the blow with which St. Michael sent the devil to hell.

A mysterious imaginary line links seven monasteries, from Ireland to Israel. Is it just a coincidence? These seven sanctuaries are very far from each other, and yet they are perfectly aligned (siviaggia.it).

The Sacred Line of Saint Michael the Archangel represents, according to legend, the blow the Saint inflicted the Devil, sending him to hell.

In any case, it is surprising how well these sanctuaries are, in fact, aligned. But the details of such alignment are also

astonishing: the three most important sites, Mont Saint Michel in France; the Sacra di San Miguel in Val de Susa; and the Sanctuary of Monte Sant'Angelo in the Gargano are all the same distance one from the other. Some say this is a reminder from the Holy Archangel: the faithful are expected to be righteous, walking the straight path.



1. Skellig Michael, The line begins in Ireland on a deserted island, where Archadgel Michael would have appeared to St. Patrick, to help him liberate that country from the devil.

If all this was not surprising enough, the Sacred Line also is perfectly aligned with the sunset on the day of the Northern Hemisphere's Summer Solstice.



2. St. Michael's Mount The line heads south to England on a Cornish islet which at low tide joins the mainland. Here St. Michael is said to have spoken to a group of fisherman.



3. Mount St. Michael The sacred line then goes on to France, on another famous island in Mont Saint-Michel, also one of the places in which St. Michael appeared to St. Aubert, urging him to build a church in the rock.



4. Sacra Di San Michele About 1000 km away in Val de Susa, the fourth sancturay arises. The very same straight line links this sacred place to the rest of the monasteries dedicatd to St. Michael.



5. Santuario Di San Michele Archangelo Moving another 1,000 km in a straight line, one reaches Puglia, where n inaccessible cavern has become a sacred place. Its story goes back to the year 490, when St. Michael appeared to San Lorenzo Maiorano.



6. Symi's Monastery From Italy, the archangel's footprints reach the sixth sanctuary. This one is in Greece, on the island of Symi. This monastery houses a three-meter-high statue of the Archangel, one of the largest in the world.



7. Mount Carmel Montery The Sacred Line ends in Israel, in Haifa. This place has been revered since antiquity, and it's construction as a Christian and Catholic sanctuary dates back to the 12th century.



Top: Blessed Mother and St. Elizabeth, **Left:** St. Kateri, St. Josephine Bakhita, St. Angela Merici, **Right:** St. Mary Magdalene, St. Therese of Lisieux, Servant of God Dorothy Day **Front:** St. Catherine of Siena, St. Joan of Arc, St. Edith Stein, St. Elizabeth of Hungary

finding a spiritual girlfriend

Jean Anthony

The Mass readings during this Easter season have inspired us with accounts of devoted women ministering to Jesus, standing by him in his terrible suffering, mourning his death, going to anoint his body and finally proclaiming his resurrection! As women in the Church today, we are called to share our faith and be the inspiration for the renewal of our Church and the spread of the Gospel.

The Women's GIFT ministry is "Zooming" through this time of social distancing. Inspired by the Formed program, **Your Relationship with the Saints**; Finding Companions for Your Life's Journey, we are studying the lives of holy women and saints. We've learned more about popular saints like St. Bernadette, but also discovered some unknowns like Henriett DeLille and Thea Bowman. As we research, and discuss their lives we discover their unique gifts and missions as women in the Church. Often referring to them as our *spiritual girlfriends* who intercede for us in heaven. Learning about their fascinating lives helps

us to appreciate the many gifts women bring to the Church, and perhaps recognize these gifts in ourselves.

Some of our favorites are St. Faustina, St. Maria Goretti, and St. Corona, an early martyr. In the next few weeks we will learn about St. Therese of Lisieux, St. Gianna Molla and Chiara Lubich, the founder of the Focolare Movement. There's still time to join us. We look forward to seeing you! [Register at stlawrenceotoole.org/WGift_Saints](http://stlawrenceotoole.org/WGift_Saints).

"It is very gratifying to keep sharing our faith, our personal lives, and our knowledge with each other! We have truly become a group of friends who enjoy getting together!"
-Emily Tobitsch

"The struggles and sufferings of some of the saints that we have focused on so far, has shown me that you can overcome any obstacles or challenges, when you do it out of love for the Lord."
-Robin Liguori

"Saint Faustina is the saint for me. I wear my St. Faustina medal everyday and I am enjoying reading her diary!"
-Mary Lu Hyatt

parish support st. lawrence parish support

Weekend of May 17

In Pew Collection	\$ 5,304.00
April <i>WeShare</i> weekly	\$ 6,589.79

Total \$ 11,893.79

sacred heart parish support

Weekend of May 17

In Pew Collection	\$ 1,375.00
April <i>WeShare</i> weekly	\$ 880.00

Total \$ 2,255.00

Note: Regardless of whether you attend St. Lawrence or Sacred Heart, for convenience on a particular weekend, be assured your collection envelopes will be returned to the parish in which you are registered.

parish staff

Rev. Richard Gill.....	Pastor
Rev. Thomas Berg.....	Weekend Associate
Mark Shkreli.....	Deacon
Julie Noce.....	Pastoral Assistant
Maureen Herbstritt.....	Business Manager
Lynda Holler.....	Director of Discipleship
Sally Silvestro.....	Director of Communication
Cecilia Britz.....	Director of Evangelization and Family Program
Peter Ryan.....	Director of Music
Theresa Scorca.....	Coord. of Religious Education
Clara Segreti.....	Family Program Assistant
Gregory Rabito.....	Youth Ministry
Kim Santerre.....	Director of Early Childhood Learning Center
Irene Westin.....	Adult Sacramental Administrator
Eileen Stokes.....	Cemetery Administrator



No one should
be without
someone to
check on them.

SEND SAFETY SQUAD.

St. Lawrence and Sacred Heart will call the elderly and those with health issues. **Safety Squad** members will keep in touch to make sure the most prone to illness are looked after properly to prevent infection, offer prayer, encourage them and help them obtain any needed supplies.

Sign up your loved one
stlawrenceotoole.org/SafetySquad

LEAVE A LEGACY OF LOVE



It is important for everyone to have a will in order to insure your assets are directed according to your intentions and that everything is clear when you go back to God. Many people distribute what they have among loved ones and also generously leave a portion of their assets to the parish.

You can leave a gift to build up the future of your parish (St. Lawrence or Sacred Heart) with a bequest in your will. Some people leave a percentage such as 10% of their estate to the church, and others leave a fixed amount.

Previous generations of Catholics built up the church we inherited... leave your legacy for the Catholics to come after us.

Call the rectory to find out more information:
845-279-2021

SPRING 2020 ONLINE FAITH formation



We have searched out programs that are perfect for this place in time. There are a variety of options to strengthen your body, mind, and soul and grow closer to Jesus. Some of the programs require books and we will not be able to order them for you. The registration page will provide a suggested resource to order books directly if necessary.

Also, note shipping times are unreliable, so decide which programs you want to take and order any books immediately.

The program sessions will be run on Zoom, so you will need a computer or phone with a working camera and a mic or headphones to participate. Zoom link will be emailed to participant after registration.



NEW CLASS Pray with Peter -- Thursdays, May 28 – June 18, 7:00 pm – 8:00 pm on Zoom
Register: stlawrenceotoole.org/PrayerWithPeter

Men's Ministry -- Saturdays ongoing, 7:00 am – 8:30 am on Zoom
Register: stlawrenceotoole.org/MensMinistry



From Mourning to Joy Bereavement Ministry -- Tuesdays ongoing 7:00 pm – 9:00 pm on Zoom
Register: stlawrenceotoole.org/GriefShare

NEW CLASS Pietra Fitness— Saturdays, May 23-June 13 on Zoom
Register: stlawrenceotoole.org/PietraFitness



EVERY MONDAY IN EASTER

Seasons of Praise



Confessions
4 pm-7 pm

May 25, 7pm

LIVE STREAMED
stlawrenceotoolelive.org

 st lawrence o'toole