



september 19, 2021 the twenty-fifth sunday in ordinary time

## st. lawrence o'toole & sacred heart parishes

### Mass schedule

#### St. Lawrence

##### Saturday Vigil

5:30, 7:30 pm (Spanish)

##### Sunday

8:00, 9:30, 11:00 am, 12:30 pm (Spanish)

5:30 pm

##### Monday-Friday

8:30 am

#### Sacred Heart

##### Saturday Vigil

4:00 pm

##### Sunday

10:30 am

#### St. Lawrence Cemetery

Plots and cremation niches are available for purchase.

Cemetery office 845-279-2021 x201

call to schedule an appointment.

#### [stlawrenceotoole.org](http://stlawrenceotoole.org)

31 Prospect Street  
Brewster, NY 10509  
845-279-2021

#### [sacredheartpattersonny.org](http://sacredheartpattersonny.org)

414 Haviland Drive  
Patterson, NY 12563  
845-279-4832

**Instagram:** [stlawrenceotoole\\_brewsterny](https://www.instagram.com/stlawrenceotoole_brewsterny)

**Facebook:** St. Lawrence O'Toole  
& Sacred Heart

**Twitter:** St. Lawrence O'Toole Church

**YouTube:** Saint Lawrence



2021 St. Lawrence & Sacred Heart Golf Outing

OCTOBER 16, 2021  
THE AMBER ROOM COLONNADE  
1 STACEY RD, DANBURY, CT • 5 PM-10 PM

# Gala 21

CELEBRATING 150<sup>TH</sup> ANNIVERSARY OF  
ST. LAWRENCE O'TOOLE'S FIRST CHURCH

Grab some friends for  
a night of dancing and fun!

\$175 per person

Includes: Cocktail Hour, Surf & Turf Entree, Salad, Dessert, Coffee or Tea,  
Wine, Beer, & soda. Cash Bar for liquor

For more information contact:

Betsy Hansbury 845-392-3052 or [betsyhansbury@gmail.com](mailto:betsyhansbury@gmail.com)

Reserve your spot today! [stlawrenceotoole.org/gala2021](http://stlawrenceotoole.org/gala2021)



st lawrence o'toole  
sacred heart



September 19, 2021

## while we're at it

**our vision** Create a parish of missionary disciples whose personal relationship with Jesus Christ inspires others into a life-changing relationship with Him.

Dear Friends,

We're really proud of the work **Brewster Cares** is doing for the poor and homeless of our area. It has gotten engaged with those in our neighborhood who wander the streets with no home, often due to mental illness or addictions. As Christians, we reach out with love to these brothers and sisters and try to do what we can, because Jesus teaches us that what we do "for the least of my brothers" we do for him.

**Brewster Cares** also offers **tutoring for kids** struggling in school especially after COVID impacted the school year where so many fell behind. It offers **English as a second language** for immigrants, so they can move from the margins and join in the wider society. It has started "supper hugs" delivering meals to those with family members sick at home, or who have passed away. It is hoping soon to offer **literacy classes** to adults who never learned to read or write, and who are stuck on the sidelines of an economy they don't have the basic skills for. We've run food drives, clothing drives, and essential items at different times...



All that is the work of outreach and service we are called to do as Christians... we need more generous souls who want to help by volunteering their time in love and service. Maybe that is you...

We also need to raise funds to keep the good work of **Brewster Cares** going – so we're having a **fundraising luncheon at Las Mananitas on Oct. 9**. See the ad here in the bulletin. If you can't attend, perhaps you could make a contribution for our local poor.

Tina Grant's article in this bulletin about the **Tilly Foster mine** and its collapse 125 years ago got me thinking hard... about those ten miners whose funerals were here at St. Lawrence. No doubt it rocked the town to its core. They were Irish and Italian immigrants who came to America in search of a better life, like most of our parents, grandparents or great-grandparents did years ago. They did it for their kids and future grandkids, so we could all live in freedom and prosperity. "Greater love hath no man than this, than he lay down his life for his friends..."

For all those who serve their families and the greater family of the poor and needy, thank you for your generous, Christ-like love.

God bless,

Fr. Richard Gill



# come to believe

it's time to register for religious education: grades 1-8  
enroll your child today for religious education

[stlawrenceotoole.org/Religious\\_Ed](http://stlawrenceotoole.org/Religious_Ed)



st lawrence o'toole  
sacred heart



## PLAN NOW FOR YOUR ETERNAL RESTING PLACE

Single or double plots or columbarium for  
interment of ashes are available.

Contact the Cemetery Office at  
845-279-2021 x201 for more information

**ST. LAWRENCE CEMETERY**  
20 Turk Hill Road, Brewster, NY 10509



**BECOMING CATHOLIC  
OR RETURNING CATHOLICS**

**Classes starting soon**

For more information  
Contact Irene Westin  
at 845-279-2021  
or [iwestin18@gmail.com](mailto:iwestin18@gmail.com)

Ever wonder  
your purpose?  
You're not alone.

Alpha is about people who gather over a meal while exploring what their faith means to them in the world today. There are no wrong answers, no one judges you – there's just honest conversation and friendly support from people exploring things that make life matter. You'll make new friends and get to know Jesus and the Holy Spirit better.

#tryalpha

**ST. LAWRENCE:**

*ENGLISH:*

Thursdays 7-9 pm

OCT 6-DEC 23

Sundays 9-11 am

OCT 3-DEC 19

*SPANISH:*

Wednesdays 7-9 pm

OCT 5-DEC 22

*YOUNG ADULTS*

Thursdays 7-9 pm

OCT 6-DEC 23

**SACRED HEART**

Thursdays 7-9 pm

OCT 6-DEC 23

REGISTER AT [BREWSTERALPHA.COM](http://BREWSTERALPHA.COM)

Alpha



## tilly foster mine

TINA GRANT



In the 1800s iron mining was a prominent part of our town's life. The Village of Brewster sits upon a maze of old mine passages. Tilly Foster Mine is one of the few mining landmarks left in Brewster. It was named for Tillingham "Tilly" Foster who owned the land the mine was on. Foster died in

1842. The property was eventually owned/mined by the Harvey Iron & Steel Company.

In 1853, the mine opened, providing jobs for the flux of immigrants from Wales, Ireland, Sweden, Italy, and Hungary to Brewster. They settled around the mine, and it became known as "Tilly Foster," with its own general store, post office, school and Episcopal chapel. The mine was rich and diverse in minerals. Iron ore was shipped to NYC and large Bessemer ore was shipped to Scranton, PA, to make steel rails for the Lackawanna Steel Co. According to the local paper, the mine was never safe. It provided risky work in a dangerous job which often ended in death. Most times, if a miner lost his life, it was ruled "accidental." This was part of the immigrant experience, not just in Brewster but all over.

In the 1870s, the mine was 600 feet deep. Three hundred miners were employed, producing 7,000 tons of ore per month. From 1887 to 1889, the mine was made into an open-pit, featuring a wire cable system, engines, and air compressors to hoist tons of rocks and ore from the mine. At one time it was the largest open-pit operation in the world!

On Friday, November 29, 1895, at 3:30 pm, a major collapse occurred at the mine killing thirteen miners, 300 feet below the surface. Ten bodies were recovered. Three miners were buried under rock. On December 1, 1895, a funeral for five miners was held at St. Lawrence. It was the largest funeral ever witnessed in Brewster. The line of carriages that followed the five hearses bearing the remains, was over one mile in length and extended from the church to the cemetery. On December 2, 1895, a funeral for the remaining five miners was held at St. Lawrence. Fr. Henry expressed "sorrow for the dead, both known and unknown." The local paper reported, "Too much praise cannot be said of Rev. Fr. M.J. Henry, of St. Lawrence O'Toole Church, who officiated at both funerals. His sermons were very impressive and consolatory. His efforts to alleviate the sorrows of the bereaved have been untiring." The large number in attendance was a witness of their Catholic faith.

The mine was closed by the State Mine Inspector. It later reopened. Two years later it flooded, and the mining ceased altogether. During World War II, it was used by soldiers to test their diving equipment. Today it is used occasionally for diving procedures/test diving equipment. It is peaceful, making it hard to imagine the history beneath its surface.



## 18 holes = good work to help the homeless!

JUDY CALLAHAN

Sometimes when we read or hear scripture, we may think of it as a story from the past and not always see the relevance of the message to our own daily lives. Perhaps we're distracted or don't fully understand the context of the story. The relevance of this week's reading from the second chapter of St. James, which talked about faith and works, was amazingly on target in relation to our September Golf Outing event.

The 29th Annual Sacred Heart & St. Lawrence O'Toole Golf Outing at Centennial Golf Club, to say it was a success is an understatement! With a full roster of golfers, many generous sponsors, contests, raffles, a live auction, and a hard-working committee who worked to make it a reality, the event raised an incredible amount of money approximately \$45,000, for the **Brewster Cares** homeless shelter. The weather was perfect for golf, and golfers also enjoyed a buffet lunch and a delicious dinner. It takes a lot of planning and coordination to put together an event of this magnitude, but the committee of volunteers assembled by Fr. Rich and supported by his talented staff, accepted the challenge. Ed Colello was our emcee and auctioneer, and Tina Pennecchia our event photographer. You didn't even need to be a golfer!

The golf outing has a long history in our parishes and over the years has been led by several long-term volunteers who were dedicated to helping our parishes. They put their faith into action and by their works, raised funds for key parish programs. This year was no exception as the baton was passed to a new committee of volunteers. Our faith brought

us all to the parishes and by our works, Brewster Cares will be able to care for our homeless neighbors again this winter.

This is only the start of the second year of operation for Brewster Cares and already dozens of volunteers have committed time to help the homeless in our community. Lots of opportunities still exist. If you've been looking please consider this an invitation to get involved and demonstrate your faith through your works. You'll be glad you did! We can accomplish so much with a little bit of faith and a willingness to take the challenge.

*What good is it, my brothers and sisters, if someone says he has faith but does not have works? Can that faith save him? If a brother or sister has nothing to wear and has no food for the day, and one of you says to them, "Go in peace, keep warm, and eat well," but you do not give them the necessities of the body, what good is it? So also faith of itself, if it does not have works, is dead. Indeed someone might say, "You have faith and I have works." Demonstrate your faith to me without works, and I will demonstrate my faith to you from my works.*  
-Jas 2:14-18

We are grateful to all our sponsors and to everyone who contributed in any way to making the day such a success. Special thanks are extended to: **EVENT SPONSORS:** PCSB Bank, Liffey Van Lines Moving and Storage  
**DRINK CART, LUNCH & DINNER SPONSORS:** John Civetta & Sons, ICON Interiors, New York Light, Source Corp, A.S.K. Electric, P.E. Stone, Inc, B.P. Mechanical, Pasta Life, Spectre Form, Cirocco & Ozzimo, Inc., **HOLE IN ONE SPONSOR:** Tom Healy & Meadowland of Carmel  
**GOLF GIFT BAG SPONSORS:** Laborers International Union, Covington Commercial Realty, H.P. Barnes, Inc, Liberty Contracting Corp, Sovereign Mechanical Corp, New Gen Painting, Finest Painting & Decorating, Inc, Henick-Lane Inc, Godsell Construction, Pierpont Mechanical Corp, Power Source Electric, La Guadalupana Restaurant & Mini Mart, Alliant

## pray for

Please remember our brothers and sisters in the Lord who have asked for prayers:

Jennifer Lipari ◦ Janice Labatte ◦ Jackie Pasquale ◦ Addyson Ashley Anello ◦ Marianne Gallacher ◦ Bridget Kenny ◦ Betty Dobbins ◦ Garecht/Pinzur/Sarlo Families ◦ Patricia Willis ◦ Catherine Sloomaker ◦ Demario Creaco ◦ Barry Newman ◦ Baby Wyatt Bowen ◦ Jerry Davis ◦ Danny Hernandez ◦ Russell Snyder ◦ Shirley Giglio ◦ Cindy Agosto ◦ Barbara Mc Guire ◦ Vincent Lambino ◦ Michael Tarr ◦ Lettie Friis ◦ JoAnn Montalbano ◦ Joan DiGioia Lucas ◦ Robbi Blacharski ◦ Judy McDermott ◦ John McCabe ◦ Ava DiBenedetto ◦ Noah Martinez ◦ Thomas Concolato ◦ John Taylor ◦ Marie Taylor ◦ Angelica Rivera ◦ Jason Morales ◦ Brianna Martinez ◦ Carole Manley ◦ Michael Taylor ◦ Larry Iazzetti, Sr. ◦ Kevin Valle ◦ Dianne Lamoureux

Names will remain on the Prayer List for 90 days and then will be transferred to the prayer list in the Adoration Chapel. To add names to or remove names from the Prayer List, please email: [SLOT.SH.Office@gmail.com](mailto:SLOT.SH.Office@gmail.com)

## cyo basketball registration

Sacred Heart-St Lawrence CYO Basketball Registration for the 2021-2022 girls and boys CYO basketball season (grades 3 through 12) will take place on Wednesdays, **September 22 and September 29 from 7-9pm** in the St Lawrence Gym. The registration fee of \$225 must be paid at the time of registration by cash or check (no credit cards).

## blessing of the pets

This year the Blessing of the pets in honor of St. Francis will be at Sacred Heart at 12 noon and at St Lawrence O'Toole at 2:00 pm on October 3rd.

## get your orders in for the K of C Lawn Crèche \$80



Made from PVC material. Crafted by the Knights (lawn tie-downs included). Contact Bruce Colombraro at 845-279-6461, or [bac13@comcast.net](mailto:bac13@comcast.net), Andrew Simmons at 203-241-3746 for more info.

Free delivery in Brewster/Southeast -Check payable to: St. Lawrence Council #1495 Mail to: St. Lawrence Council #1495, P.O. Box 268, Brewster, NY 10509

## season of praise

**Monday, September 20**

Talk by

**Fr. Art Mollenhauer**

7:00 pm

Confession

4:00 pm-8:30 pm



## mass intentions

**Saturday, September 18**

4:00PM *Sacred Heart* Charles "Chino" Morganti  
5:30PM Michael Carleton  
7:30PM Spanish

**Sunday, September 19**

8:00AM Mike Brady  
9:30AM Giamundo & Paduano Families  
10:30AM *Sacred Heart* The Souls in Purgatory  
11:00AM McClusky & Ebert Families  
12:30 PM Spanish  
5:30PM Nora Huvane

**Monday, September 20**

8:30AM Theresa Howe

**Tuesday, September 21**

8:30AM Antoinette Babon

**Wednesday, September 22**

8:30AM Mary Whalen

**Thursday, September 23**

8:30AM Edmon Viray

**Friday, September 24**

8:30AM Judy Bruen

**Saturday, September 25**

4:00PM *Sacred Heart* Richard Lucas  
5:30PM Gilbert Verdugo  
7:30PM Spanish

**Sunday, September 26**

8:00AM Theresa Howe  
9:30AM Michael Carleton  
10:30AM *Sacred Heart* Edward Richardson  
11:00AM Anthony Magliocco  
12:30 PM Spanish  
5:30PM Donald LaMere



Get your 150th Anniversary swag for St. Lawrence & Sacred Heart after the Sunday Masses.





LYNDA HOLLER  
DIRECTOR OF DISCIPLESHIP

gossip, greed, and on and on. All the sins have a form and are dangling off the cross in all directions, making it look very heavy and ugly. Surrounding Him on the road to calvary are the people of all nations, young and old. Many of them are saints; not just the famous, canonized ones, but also the unknown saints. People who have chosen to be faithful to Christ and have agreed to suffer for the sins of the world and the redemption of their brothers and sisters. Those people are also carrying disproportionately large crosses overloaded with sin forms.

Amongst the crowd are innumerable other people who are loading more sins upon the crosses of Jesus and the saints. Some look sneaky, others laughing, others hopeless. Forms of adultery, sloth, pornography, gluttony and the others are continually being added, further weighing down the holy ones as they drag their burdens to Calvary. Some crosses even have men and women hanging on and being dragged along.

But in the distance, at the top of the hill where Jesus' suffering will culminate, is an ornate, golden door. Through St. Teresa Benedicta's words, I see the way that Jesus carried our burdens out of this world and the way He models to his holy ones how to walk alongside Him and do their part. To accept suffering with undying love and confidence in the One who will reward them on the other side of that door.

**Scripture:** Read Matthew 16:24-27. What words touch you?  
**Call to Action:** Where are you in this Road to Calvary scene? How might you lighten or help carry the load?



**Mysteries – Weighed Down with Love**

Edith Stein, also known as St. Teresa Benedicta of the Cross, wrote a beautiful reflection on the burden of sin. "The burden of the cross that Christ assumed is that of human nature with all its consequences in sin and suffering to which fallen humanity is subject. The meaning of the way of the cross is to carry this burden out of the world." I always ponder words like these in the hopes of putting an image to them, so I can understand the message more intimately.

I envision Jesus carrying an extraordinarily large cross on his shoulder weighed down with pride, abortion, anger, fornication,



Summer Camp

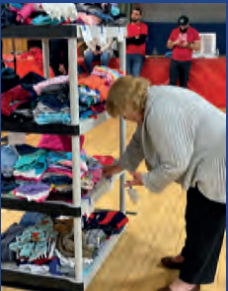


Homeless Shelter

A little from you  
makes a big  
difference!



Tutoring grades 1-5



Boutique Gratis



Midsummer Market

Join us for our  
**Brewster Cares  
Benefit**



Supper Hugs



Honoree Village of Brewster  
Chief of Police John DelGardo

**LAS MAÑANITAS • OCTOBER 9<sup>TH</sup>**

Rt. 22 Brewster

12 noon • \$100 per person

**RSVP** [weblink.donorperfect.com/BCLuncheon](http://weblink.donorperfect.com/BCLuncheon)

## parish support st. lawrence parish support

### Weekend of September 12

In Pew Collection	\$	7,808.00
August WeShare weekly	\$	5,854.59
<b>Total</b>	\$	<b>13,662.59</b>

## sacred heart parish support

### Weekend of September 12

In Pew Collection	\$	2,488.00
August WeShare weekly	\$	448.38
<b>Total</b>	\$	<b>2,936.38</b>

**Note:** Regardless of whether you attend St. Lawrence or Sacred Heart, for convenience on a particular weekend, be assured your collection envelopes will be returned to the parish in which you are registered.

MAYBE YOU'RE  
**ONE OF US**

## parish staff

Rev. Richard Gill.....	Pastor
Rev. Thomas Berg.....	Weekend Associate
Fr. Art Mollenhauer.....	Weekend Associate
Mark Shkreli.....	Deacon
Julie Noce.....	Pastoral Assistant
Maureen Herbstritt.....	Business Manager
Lynda Holler.....	Director of Discipleship
Sally Silvestro.....	Director of Communication
Cecilia Britez.....	Director of Evangelization and Family Program
Juan de Dios Gonzalez.....	Director of Music
Melody Salas-Curra.....	Sacred Heart Director of Music
Theresa Scorca.....	Coord. of Religious Education
Clara Segreti.....	Family Program Assistant
Jay Sulit.....	Youth Minister
Kim Santerre.....	Director of Early Childhood Learning Center
Irene Westin.....	Adult Sacramental Administrator
Gabby Ramirez.....	Office Support
Eileen Stokes.....	Cemetery Administrator

**Beware of Social Security Phone Scams!**



**HANG UP** on phone scams.  
**TELL** your friends and family.  
Let's **SLAM** phone scams together.

Learn more at [oig.ssa.gov/scam](http://oig.ssa.gov/scam)

**FEEHAN INSURANCE AGENCY, INC.**

~ Serving Brewster Since 1986 ~  
2350 Rte. 6 • Brewster  
(845) 278-7070 • Chris Feehan  
[FeehanInsurance.com](http://FeehanInsurance.com)

**McGoldrick & McGoldrick**  
Certified Public Accountants, LLP

413 Route 164, Brewster, NY 10509  
**(845) 878-7703**  
[www.mcgoldrickcpa.net](http://www.mcgoldrickcpa.net)

**Volz Auto**

**VOLZ AUTO GROUP**

Meadowland GMC  
1952 Route 6  
Carmel, NY 10512  
845-225-8468

Brewster Ford  
1024 Route 22  
Brewster, NY 10509  
845-279-2992

Meadowland of Carmel  
1952 Route 6  
Carmel, NY 10512  
845-225-8468

Bill Volz Westchester  
2293 Crompond Rd  
Cortlandt Manor, NY 10567  
914-739-7100

**VolzAuto.com**

**LUMAR**  
Plumbing & Heating, Inc.

[Lumarplumbing@gmail.com](mailto:Lumarplumbing@gmail.com)  
Residential/Commercial

**845-279-4324**  
[www.Lumarplumbing.com](http://www.Lumarplumbing.com)

Serving Brewster Since 1960

ESTATE PLANNING • ELDER LAW • REAL ESTATE

LAW OFFICE OF  
**ANDRES D. GIL, PLLC**

Honor, Integrity, Compassion, and Dignity



Call us today at  
**(845) 940-1110**

**ADG-LAW.COM**

New York State Certified  
Service-Disabled Veteran-Owned Business

ADG-LAW.com  
973 Route 22, Suite 3, Brewster

**Scotty's**

**PUTNAM LAKE WINES AND LIQUORS**

Aleg & Scotty Cairney **845-279-2043**  
74 FAIRFIELD DRIVE, PATTERSON  
Hours: Sun 12-5:30 • Mon 9-7 • Tues-Sat 9-8

**Better Homes and Gardens REAL ESTATE**

**RAND REALTY**

**Tony Berardi**  
YOU DREAM IT | I FIND IT

**TONY BERARDI**  
Real Estate Associate Broker ~ Parishioner  
**914-588-4564**  
[www.WestchesterPutnamRealtor.com](http://www.WestchesterPutnamRealtor.com)  
342 DOWNING DRIVE • YORKTOWN HEIGHTS, NY 10598

**PUTNAM LAKE MARKET**

Quality & Service As Always  
Open Mon-Sat 6am-8pm • Sunday 6am-6pm  
74 FAIRFIELD DR. • PATTERSON, NY 12563  
T: 845.279.5905 • F: 845.279.5965

**HUDSON VALLEY SHOOTING SPORTS**

FIREARMS AIRSOFT ARCHERY

**845-444-5233**

[HVSHOOTINGSPTS.COM](http://HVSHOOTINGSPTS.COM)  
/HVSHOOTINGSPTS

**HOGAN & ROSSI**  
**ATTORNEYS AT LAW**  
 3 STARR RIDGE ROAD • SUITE 200 • BREWSTER, NY 10509  
 John Jay Hogan (845) 279-2986 Donald M. Rossi

**ABLE AUTO INSURANCE**  
 Somos hispanos • Notario Público  
 - Seguros de Auto  
 • (Se aceptan licencias de otros estados)  
 - Traducciones de Español a Ingles  
**52 MAIN ST. • 278-1810**

**aversano's**  
 restaurant • bar  
 845.279.2233  
 1620 Route 22 (Towne Center) • Brewster  
 Dine-In Takeout & Delivery Catering  
 aversanosrestaurant.com

**How Will You Pay for Retirement? Let's Talk.**  
**Paul G Lavelle**  
 Financial Advisor, Parishioner  
**Edward Jones**  
 MAKING SENSE OF INVESTING  
 Bus. : 845-471-6346 • Cell: 914-318-8523  
 paul.lavelle@edwardjones.com • edwardjones.com/paul-lavelle Member SIPC

**ADAMS**  
**WATER SYSTEMS**  
 • Well Pumps  
 • Well Tanks  
 • Water Treatment  
**Dave Adams**  
 Master Plumber  
**845-855-8600**  
**TheWellPumpGuys.com**

Protect Your People and Your Business with Premium Products and Personal Service  
 Contact Lauren Nicholson at 845-230-3331  
 laurenicholson@worldinsurance.com  
**Large Resources. Local Relationships.**  
 WORLD INSURANCE

**Ledley Food Service**  
 "Excellence Through Experience"  
**845-279-9595**  
 Brian Ledley, Parishioner  
 ~ Serving Putnam Since 1958 ~  
**LedleyFoodService.com**

**COSMETIC, IMPLANT AND FAMILY DENTISTRY**  
 Small Town Values • World Class Care  
**Alexander Bogler DDS**  
**845.278.6116 AlexanderBoglerDDS.com**  
 83 Haviland Drive (Across from Monument) • Patterson

**Brewster Paint & Decorating Center**  
 Discounted Window Treatments  
**Benjamin Moore** Paints  
 38 ARGONNE ROAD • BREWSTER • 845-279-7686  
**brewsterpaintanddecorating.com**  
 MONDAY-FRIDAY 6:00-5:30PM • SATURDAY 6:30AM-4:00PM  
 30 YEARS

**DURKIN**  
**PROPANE**  
**845-279-8060**

**LJS Alegria Painting**  
 PARISHIONER OWNED & OPERATED  
 Interior & Exterior Painting  
 Power Washing • Deck Staining  
 Wall Paper Removal • Taping  
 Sheetrock Repair • Carpentry  
 FREE ESTIMATES **845-721-4615** FULLY INSURED & LICENSED

**GOD BLESS AMERICA**

**OPEN 8AM EVERY DAY**  
**BURGER KING**  
 CLASSIC CAR SHOW ON FRIDAY EVENINGS  
 1519 Rte 22 • Brewster  
 Download the Burger King App  
**DOORDASH GRUBHUB**  
 Patio Dining • Play Area  
**845.278.2502**

LAW OFFICE OF  
**Noreen K. Scaperotti**  
 ESTATE PLANNING  
 ELDER LAW  
 REAL ESTATE  
 facebook  
**(845) 661-7540**  
 nscaperotti.law@gmail.com  
**www.ScaperottiLaw.com**

**GAETANO**  
 PIZZA, CALZONES & RESTAURANT  
 LUNCH • DINNER • TAKE OUT  
 100 Independent Way • Brewster (Home Depot Shopping Center)  
**www.GaetanosPizzaBrewster.com**  
**845-278-9500**  
 Catering Available Any Size Event

**O'MARA & ASSOCIATES**  
 Accounting ~ Tax Preparation  
 Individual - Partnerships  
 Corporations - LLC's & LLP's  
 73 FAIRFIELD DR. • PATTERSON, NY  
**(845) 279-2228**  
 omara\_associates@yahoo.com  
 National Society of Tax Professionals  
 National Association of Tax Practitioners

**BALSAMO-CORDOVANO FUNERAL HOME LLC**  
 Family Owned & Managed  
 Joseph J. Balsamo, Lic. Dir. John R. Balsamo, Lic. Dir.  
 Jonathan W. Garcia, Lic. Dir./Mgr.  
 "Detailed Service for Memorable Funerals"  
 15 Church Street, Carmel, NY 10512 (Off Route 6)  
**845-BAL-2144**  
**BalsamoCordovanoFuneralHome.com**

**GJON KARAQI**  
 Licensed Real Estate Salesperson  
 201-832-1213 Cell  
 gjon@kw.com  
**VERA KARAQI**  
 Licensed Real Estate Salesperson  
 201-832-2037 Cell  
 verakaraqi@kw.com  
 57 US 6 • Baldwin Place, NY 10505  
**www.verakaraqi.kwrealty.com**

**PORTOFINOS**  
 PIZZA & PASTA  
 CATERING FOR ALL OCCASIONS & SPECIAL EVENTS  
 Wilson Vataj, Owner/Operator  
**845-363-1024**  
**www.portofinos.biz**  
**983 ROUTE 22 • BREWSTER, NY**  
 OPEN 7 DAYS A WEEK • DINE-IN • TAKE-OUT • DELIVERY

**STAY SAFE, STAY HEALTHY AND STAY POSITIVE!**

**CONNECT 2AFFECT.ORG**  
 Social isolation is more than feeling lonely.  
**AARP Foundation**  
 For a future without senior poverty.

**SCLAFANI ENERGY**  
 Fuel Oil • Gasoline • HVAC • Service • Propane • Diesel  
 Full Service, 24 HR Emergency Assistance  
 Specializing in Weil McLain, Biasi, System 2000, Peerless, Generac, Carrier and all other Major Brands.  
 Install, Repairs & Upgrades **845.628.1330** Place an Order Online  
 Budget Accounts, Automatic or Call for Free Estimates • C.O.D. Fuel Pricing!  
**www.SCLAFANIENERGY.com**

**ROUTE 22 AUTOMOTIVE**  
**COMPLETE AUTOMOTIVE REPAIR**  
**Jose Ramirez**  
**914.621.1056**  
 Hablamos Español  
**3069 Route 22 • Patterson, NY**  
**PROFESSIONAL, QUALITY SERVICE**

**MEZZALUNA**  
 Pizzeria & Restaurant  
**845-279-1800**  
 BUY 2 LG PIES GET 1 ORDER OF MOZZARELLA STICKS FREE!  
 W/THIS AD. EXP 09/30/21  
 1511 Route 22 • Brewster, NY  
 instagram@mezzalunany  
 facebook@Mezza Luna Due  
**www.mezzalunabrewster.com**

**PCSB bank**  
 The Incredibly Neighboring Commercial Bank  
 2477 Route 6 | Brewster, NY  
 (845) 279-7101  
 FDIC

**PuTnamRidge**  
 Sub-Acute Rehab • Skilled Nursing Care  
**Medical-Model Adult Day Care**  
 46 Mount Ebo Road North • Brewster  
 (Up hill from Post Office)  
**845-278-3636 • www.PutnamRidge.com**

CHRISTOPHER M. MILANO, DIRECTOR

# Beecher Funeral Home

Family Owned & Operated For Over 70 Years

1 Putnam Ave., Brewster

845-279-3615

BeecherFuneralHome.com

"Serving Your Family As Family"

- Complete Funeral Services
- Cremation
- Pre-Need Arrangements
- Serving All Faiths



RICHARD T. HAZZARD, JR., DIRECTOR

# Dwyer Funeral Home

23 South Street, Patterson

845-878-3161

DwyerFuneralHome.com

# BREWSTER FLOWER GARDEN

14 Main Street  
(Across from Train Station)

279-5471

brewsterflowergarden.com

## LA GUADALUPANA

### MINI-MART

845-278-2858  
70 MAIN STREET • BREWSTER



### RESTAURANT

845-278-2858  
64 MAIN STREET • BREWSTER

~ Open Every Day at 5:00am! ~

## CLINICAL PSYCHOLOGIST

Patrick W. Ford, Ph.D.

Individual, Couples & Family Therapy  
for Adults and Adolescents

845-745-6980 by appt.

## PUTNAM COUNTY MONUMENTS

198 Route 52, Carmel, NY • 845.200.7615



Showrooms in Putnam, Orange, Rockland and Fairfield County  
Because Your Family Deserves The Very Best  
www.putnamcountymonuments.com



## JOSEPH N. MARINO, D.M.D.

FAMILY & COSMETIC DENTAL CARE

845-940-1000

612 Clock Tower Commons • Brewster, NY 10509

Instead of Remodeling...

Tear Down & Rebuild with the Experts



1995 Route 22, Brewster, NY  
(800) 879-6001

WMHConstruction.com



ALL LANDSCAPE WORK, MULCHING,  
MASONRY & TREE WORK  
santoscardona1978@hotmail.com  
PARISHIONER OWNED/OPERATED 914-227-0979

SHARON SHEIL  
Licensed Real Estate Salesperson  
~ Parishioner ~  
914-497-0912  
338 Route 202 Somers, NY 10589  
sheilestate.com



**TYNDALL**  
SEPTIC SYSTEMS INC.  
Since 1968  
845-279-8809  
tyndallseptic.com

The **PUTNAM**  
DINER & RESTAURANT  
Open Every Day At 6:00 AM  
Private Dining Room  
878-8000  
2600 ROUTE 22 • PATTERSON  
PutnamDinerNY.com

EST. 1984 •  
**PALMER BROS.**  
HARDWARE INC.  
DAN FOX, PARISHIONER  
PAINTS • SUNDRIES • PLUMBING  
TOOLS • ELECTRICAL • HARDWARE  
1583 Rte. 22 • Country Plaza • 278-6114

**EDVIN APPLIANCE REPAIR**  
Is Your Appliance Broken? Not Working the Way It Should?  
We Can Fix It!!!  
Call Now 203-417-9065  
Edvin Espana Owner Operator  
Serving Fairfield County, CT & Putnam County, NY

SEPTIC SYSTEMS SPECIALIST  
LICENSED INSTALL • REPAIR • CLEAN EXCAVATING CONTRACTOR  
\$1000 OFF with this Ad  
Family Owned & Operated for Over 50 Years

**JINA'S**  
NAILS & MORE  
279-1212  
200 MAIN STREET • MONDAY-SATURDAY

**MILLENNIUM**  
PRINTING & GRAPHICS  
www.millprinter.com  
173 MAIN STREET • BREWSTER • 845-279-4605

**Seven Star**  
School of Performing Arts  
509 Route 312  
Brewster, NY 10509  
845-278-0728  
www.sevenstarschool.com

"Brewster's Hometown Family Market"  
Since 1957  
www.kobackers.com  
Hours: Mon.-Sat. 8 to 9 • Sun. 8 to 8

**KOBACKER'S**  
MARKET

570 North Main Street • Brewster

We Deliver! We Cater!

P: 845-279-3515 • F: 845-279-6591

**ADAMS PLUMBING & HEATING**  
Well Pumps • Water Treatment • Boilers  
Water Heaters • Gas Piping • General Repairs  
DAVID ADAMS, MASTER PLUMBER  
845-855-8600  
PUTNAM LAKE, N.Y. ~ PC-2910

AUTOMOTIVE REPAIR • BODY WORK • TOWING  
**Dons**  
Automotive & Towing  
Complete Automotive Center  
Approved Auto Repair and Towing  
556 N. Main Street • Brewster  
845-279-5527 • www.DonsAutoandTowing.com

AUDIO-VISUAL PRODUCTS, INC.  
John W. Neubauer, Parishioner  
878-4240 • Fax 878-3640  
Scanners, Printers, Copiers & More  
avpbusiness.com

**BILL HENRY TREE SERVICE** INC.  
Free Estimates Fully Insured  
BillHenryTreeService.com (845) 278-9355

~ FOR ALL YOUR OUTDOOR NEEDS ~  
**Tobacco & Sons**  
LANDSCAPING • CONSTRUCTION • EXCAVATION (RESIDENTIAL/COMMERCIAL)  
MASONRY • LANDSCAPE DESIGN • FULL SCALE LAWN CARE  
WWW.TOBACCOANDSONS.COM • 845-803-3813

**LUNA & SONS**  
PLUMBING & HEATING  
Luna and Sons Plumbing & Heating  
lunasonsplumbing.com  
Edwin Luna • Plumber, Parishioner  
lunasons.ph@gmail.com  
914-447-1664  
Westchester County, NY • Putnam County, NY

**Patterson**  
Auto Body  
AND SERVICE CENTER

**SLAM THE SCAM**  
HANG UP on phone scams.  
TELL your friends and family.  
Let's SLAM phone scams together.  
Learn more at oig.ssa.gov/scam

**LA FIESTA DECORATIONS**  
lafiestadecorations@gmail.com  
845-302-2746  
Communion Outfits for Boys & Girls  
Open Every Day! 867 Route 22 • Brewster, NY

(845) 878-3456  
Preventative Maintenance  
Hybrid Repair • Hertz Car Rentals  
Auto Fuel • Convenience Store  
2597 Route 22, Patterson  
PattersonAutoBody.com